

Pump Wi-Fi Compatibility Option

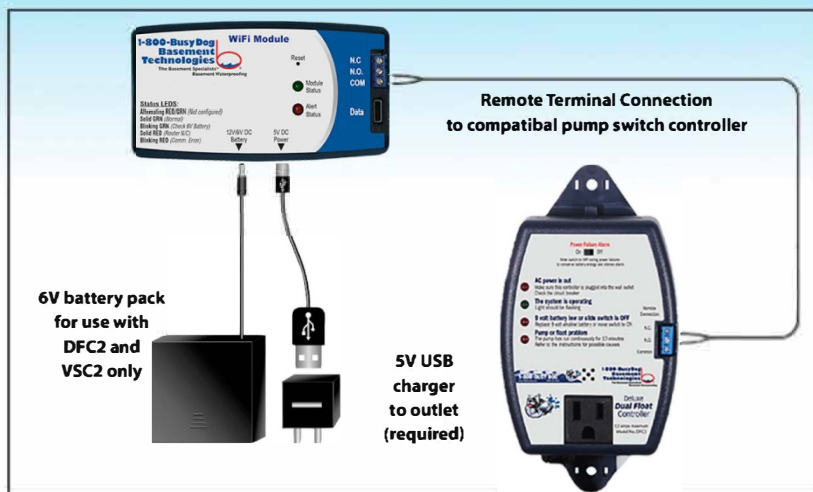


www.mudjackers.com
800-262-7584

BE ALERTED OF A PUMP PROBLEM IN YOUR BASEMENT WHEN AWAY FROM YOUR HOME

Our highcycle pump, the Powerhouse Turbo, now comes with Wi-Fi capability as an option.

The new "Wi-Fi capability" catapults us into a new age of reliability and accountability. If you have a power outage or pump failure, **YOU CAN NOW BE AUTOMATICALLY ALERTED!**



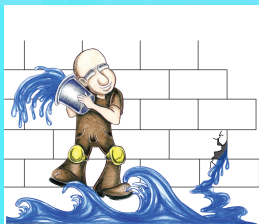
1-800-Busy Dog Basement TechnologiesTM focus has always centered on creating and improving our products to create reliable pumps and other accessories for the benefit of our customers. That begins by using premium components and designing pumps for maximum pumping capabilities, better energy efficiency and durability.

Powerhouse Turbo pumps come with three components:

- 1) Caged dual micro reed float switch, designed for high redundancy for storms
- 2) Controller Box (hooked up to float switch) utilizing solid state circuitry designed for highcycling capability, which is what you need in a basement that has a pumping unit – utilizing "triad" electronic technology
- 3) The Powerhouse Turbo pump cast iron, dual ball bearing, permanent split capacitor, with dual seals to protect the motor, is water cooled with 10 foot cord



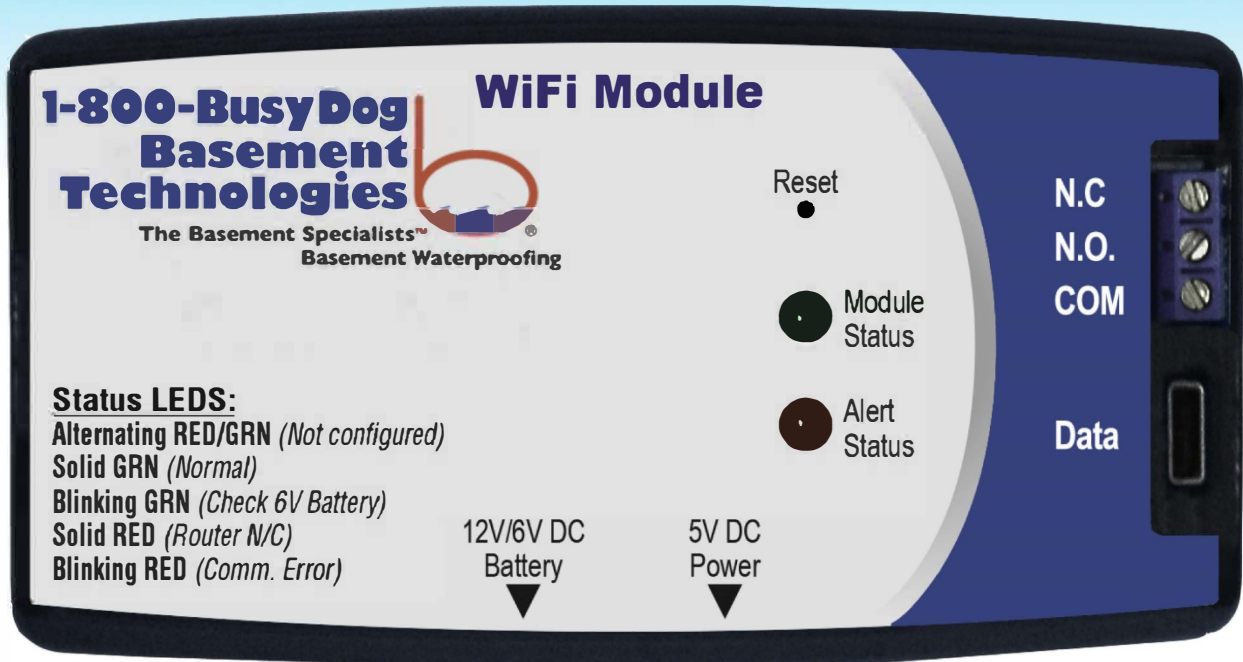
Your Powerhouse Turbo comes with this pump controller. Simply take the optional Wi-Fi module and download to your phone or device.



The basic perfect pumping unit was not enough. We partnered with an electronics company that developed the electronic Wi-Fi system and put it on the Powerhouse Turbo.

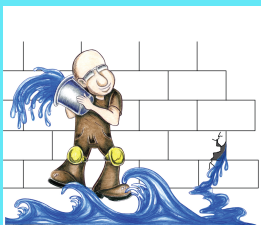
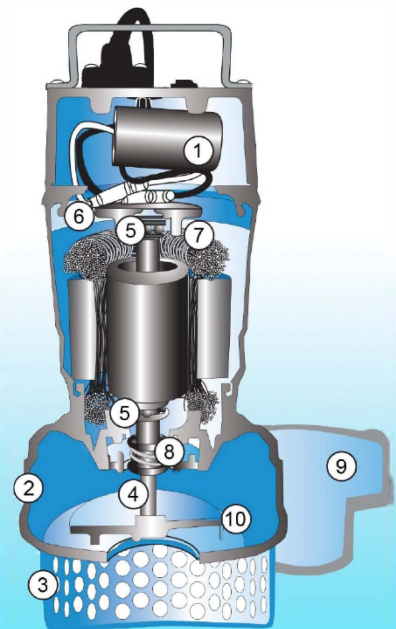
The Wi-Fi capability has been added as an optional add on feature. If a homeowner chooses to incorporate it into their system and lifestyle, the Wi-Fi module can be purchased with a tutorial on how to connect it to your cell phone or device to alert you of a power outage or pump failure when you are away from home.

AUTOMATICALLY TELLS YOUR "DEVICE" OF A PUMP ISSUE



BUSY DOG POWERHOUSE TURBO CONSTRUCTION

1. Permanent split capacitor increases energy efficiency
2. Cast iron/cast aluminum housing
3. Electroplated steel strainer
4. Shaft
5. Upper and lower sealed ball bearings provide quiet operation that homeowners appreciate
6. Water cooled (no cooling oil)
7. Thermally protected
8. 1-1/2" outlet
9. Engineered polymer impeller
10. Pumps up to 1/2" solids
11. High capacity float switch
12. Controller box on wall to installation pump



The Mudjacker's
**Basement
Solutions**

www.mudjackers.com

800-262-7584

