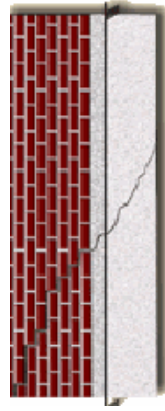
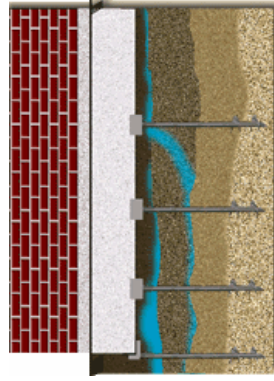


Things to look for Include:

- ◆ Windows that are difficult to open and close
- ◆ Doors that are difficult to open and close
- ◆ Cracks in bricks, stucco or exterior finish
- ◆ Sinking cement pads and entry way stairs
- ◆ Cracks in exposed sections of grade beam
- ◆ Cracks in the concrete slab



Damaged Foundation



Foundation Solution

Foundation Repair Procedure:

- ◆ Excavate down to the footing at each designated pier location
- ◆ Notch out foundation footing to accommodate support bracket
- ◆ Screw piers into excavated site to a depth where stable subsoil is reached
- ◆ Connect bracket to base of foundation and the top of pier
- ◆ Hydraulically jack foundation and adjust support brackets
- ◆ Backfill all excavated pier locations

Push Piers

Push Piers are driven into the earth under the house until they hit either bedrock or hard, compressed, load-bearing soil. Then, plates are installed on top of the piers, and the house's weight is transferred onto them. Push piers are best for heavy structures and larger homes.

With either system, one or more steel piers are driven to rock or a suitable soil bearing layer and are connected to the foundation through a metal head assembly. Once a suitable bearing stratum is reached, each pile is tested to a force greater than required to support the structure.

Hydraulic jacks attach to the embedded steel piers and are used to raise the foundation back to its original elevation. Once the structure is restored to the desired elevation the piles are affixed (bolted or welded) to wall brackets, locking the new elevation of the structure.

Piers also offer an affordable solution for decks, porches, patios, hot tubs as well as pre-fabricated buildings.



Fast & Efficient Pier Installation Process

When it comes to the overall efficiency of pier installation. Experienced underpinning professionals who have used other systems clearly prefer the Helical Pier system for the following reasons:

- ◆ **Two heavy duty foundation brackets to choose from** – plate bracket & angle bracket provide needed flexibility to address variables with footings
- ◆ **Easy to use hydraulic ram assemblies** – one technician can install and operate a ram assembly
- ◆ **Single step process** – the same ram assembly that drives pipe to refusal is also used to complete the lift and/or the stabilization process; no dismounting, disassembly or moving ram assemblies

Foundation settlement and movement requiring foundation repair can be caused by building on expansive clay, compressible or improperly compacted fill soils, or improper maintenance around foundations. What ever the cause, settlement can destroy the value of structures and even render them unsafe. Foundation repair contractors usually provide some form of underpinning as one of their services to repair a failed foundation.

If you think that there is a problem with your foundation, call The Mudjacks for an assessment of your property. We will be able to assess any damage that has occurred and determine the best plan for your situation.



Helical Piers

Helical Piers are shaped like giant screws. With the use of a hydraulic system, they are gradually screwed into the earth below the house until the helical piers reach either bedrock or hard, compressed, load-bearing soil. Then special brackets and tools transfer the weight of the house off of the fill dirt and onto the newly installed helical piers. Because of their design, helical piers are better for lightweight structures and pavement. No force is applied to the house during installation.

In any structure, some settlement is typical within the first few years after construction. But when foundations continue to sink over time causing aesthetical or structural problems foundation repair is usually the remedy. Foundation failures could also be considered as heaved foundations, cracked and buckled walls, and cracked concrete floors. Usually, more than not, water is the main cause of foundation movements. The exterior components of a home are often the most neglected parts of the structure. Roof drains, foundation drains and irrigation lines can cause major problems when plugged or broken and get little maintenance until a problem occurs (ie. Wet basements via cracks in foundations). There are other reasons for foundation movement and the cause of the problem should be determined prior to repairing your foundation. All too often a quick fix is offered without solving the cause of the problem, which can lead to further foundation movement in a short period of time. In most cases a Geotechnical and Structural Engineer should be consulted before making any repairs. An incomplete understanding of a problem may lead to an incorrect repair solution.



Causes Of Foundation Problems

Foundations are built directly on the earth. The foundation load is dependent upon the strength of the soil beneath. In nature, soil is rarely homogeneous. It tends to develop in layers or stratum, each with individual strengths and weaknesses. Figure 1.1 illustrates this stratification.

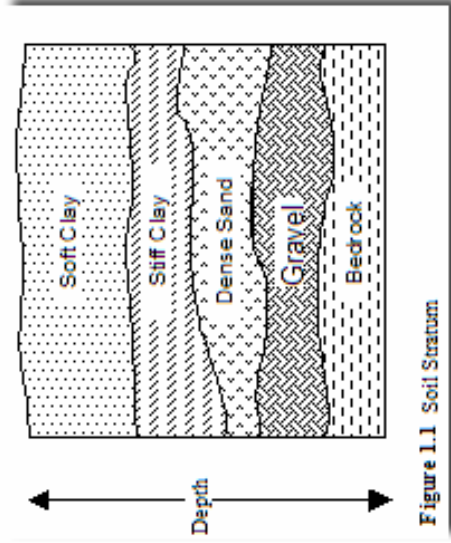


Figure 1.1 Soil Stratum

Water is the primary cause in soil problems. Whether there is too much water, causing the soil to swell, or not enough, causing the soil to shrink. If all the soil layers beneath a foundation swell or shrink uniformly, a problem is unlikely to occur. Where only part of the foundation heaves or settles, the uneven movement causes cracks and other damage.

Expansive soils, the gain in moisture, is a more serious threat to the foundation. Plumbing leaks, subsurface water like wet weather or a high water table, or surface water are the primary source of moisture gain. Improper drainage of landscape water or rainwater is considered surface water. Ensuring proper surface drainage away from the foundation will assist in keeping the foundation solid and intact.

The Mudjacker^{llc}

A full foundation repair company.

Foundation Repairs

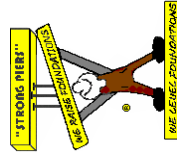
INDUSTRIAL
COMMERCIAL
RESIDENTIAL

Helical & Push Piers



Visit us online at:

www.mudjacker.com



THE MUDJACKERS covers a wide spectrum of repairs for foundations, concrete slabs, forge presses, hydro dams, bridge cranes, highways, and sewer abandonment. As well as installation of pilings for new and old structures.

Our mission is this:

We at **THE MUDJACKERS** have a history of quality and excellence for over 38 years, You will find our services to be superior in quality and competitive in price.

THE MUDJACKERS maintains the most qualified foundation repair staff in the industry. Through continuing education programs such as engineering seminars, equipment and procedural updates, and constant experience in the field, we provide a skilled and professional workforce with strong work ethics. The combination of our dedicated management staff, experienced pier installers, and state of the art equipment has kept us on the cutting edge of advanced foundation repair.

We at **THE MUDJACKERS** believe that the people we employ as well as the people we serve make our company successful. Our good reputation with homeowners, architects, and engineers has been a key element to the continuing growth and stability of our company.



MADISON 608-251-3989
MILWAUKEE 262-784-1820
RACINE—KENOSHA 262-553-9797
JANESVILLE 608-754-9343
BELOIT 608-362-7717
FAX 262-784-9332
FAX 800-804-0260



MAIN OFFICE 800-262-7584

EST. 1939